

Version	Date	Information Source	Update Details
1.0	21/08/2019	Hai Bi	Preliminary version

**Infrared Type Touch Panel**

# **IX3000 Series**

## **Technical Specification**

PRELIMINARY

This document contains proprietary technical information, which is the property of the IRTOUCH SYSTEMS and shall not be disclosed to others in whole or in part, reproduced, copied, or used as the basis for design, manufacturing, or sale of apparatus without written permission of IRTOUCH SYSTEMS.

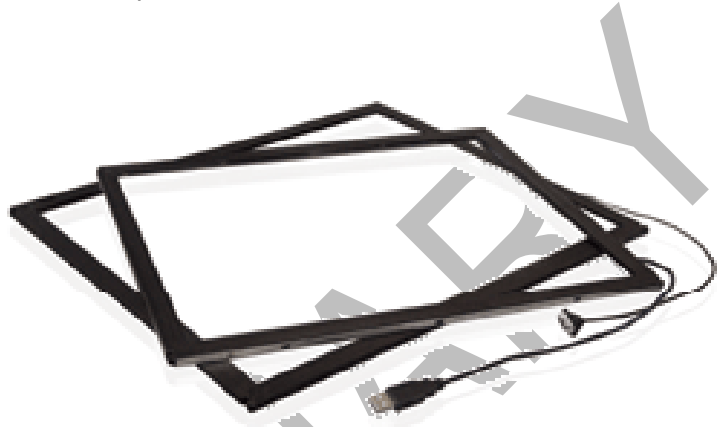
## 1、 Characters

**IRTOUCH SYSTEMS'S IX3000 Series** infrared touchscreen is designed for LCD monitor. Features such as vandal proof, water proof, maintenance free as well as long life time make the IX3000-series touchscreen an ideal choice for many interactive applications such as POS, touch monitors, Kiosks, etc.

**IX3000 Series** infrared touchscreen is a brand-new creative version compatible with existing infrared E series products and add gesture function to support zoom in and zoom out operation.

### Benefits

- Adapt to complex open country scene
- Vandal proof, scrape-resistant
- Integrated controller
- Support zoom in and zoom out gesture
- Ultra-high precision
- Ultra-Fast response speed
- Maintenance free, long life time
- Fault tolerance design to ensure reliability
- Various touch objects
- 1-5 points touch



### Typical Applications

- Delivery Lockers
- POS
- Desktop touch monitor
- Indoor/outdoor kiosk
- ATM
- In-vehicles and transportation
- Medical instrument
- Industrial control systems
- Gaming machine
- Ticket machine

## 2、 Order information

Part Number	Description
IX30050104100001	10.4" ( 4:3 ) , 3mm general tempered glass HID
IX30050151100001	15.1" ( 4:3 ) , 3mm general tempered glass HID
IX30050216100002	21.6" ( 16:9 ) , 3mm general tempered glass HID
IX30050236100002	23.6" ( 16:9 ) , 3mm general tempered glass HID

## 3、 Specifications

### Mechanical Specifications

Input Method	Finger, gloved hand, or any other opaque stylus
Touch Technology	Infrared rays interception detection, no special surface coatings
Available Size	10.4"~15.1"~21.6"~23.6"
Outside Dimensions	see Appendix I and II
Touch Active Area	see Appendix I and II
Glass	3mm tempered glass (customizable)
Transmittance	>88% with glass
Shell Material	Top Shell : Polycarbonate (PC) Bottom Shell : Aluminum Extrusion
Pressure Required to Trigger Touch Event	No pressure required.

### Electrical Specifications

Controller reported resolution		32767×32767
Touch accuracy	[mm]	<1.0mm (central area), < 2.0mm (edge area)
Touch object diameter	[mm]	≥7mm(single point), ≥9mm(multipoint )
Output		Coordinates
Calibration		Not required or Simple four-point calibration, no drift
Response Time	[ms]	≥10ms
Power requirements		Powered by USB (DC5V±5% @ 500mA)
Power consumption		<1.5W
Electrical life		61000 Hours

### Interface Specifications

Interface Type	USB	HID
Plug and Play	Plug and play and HID compatible	
Connector Type	USB	Type A

### Environmental Specifications

Temperature	Operating : -20 ~ 70°C Storage : -40 ~ 85°C
Relative Humidity	Operating : 10%-90% RH, 40°C non-condensing Storage : 10%-90% RH, 40°C non-condensing
Electrostatic Protection	Per EN61000-4-2 2008: Level 4, Class B. Contact discharge 8kV, air discharge 15kV on USB connector pins
Ambient Light Tolerance	Direct Sunlight illumination ≤150000 Lux

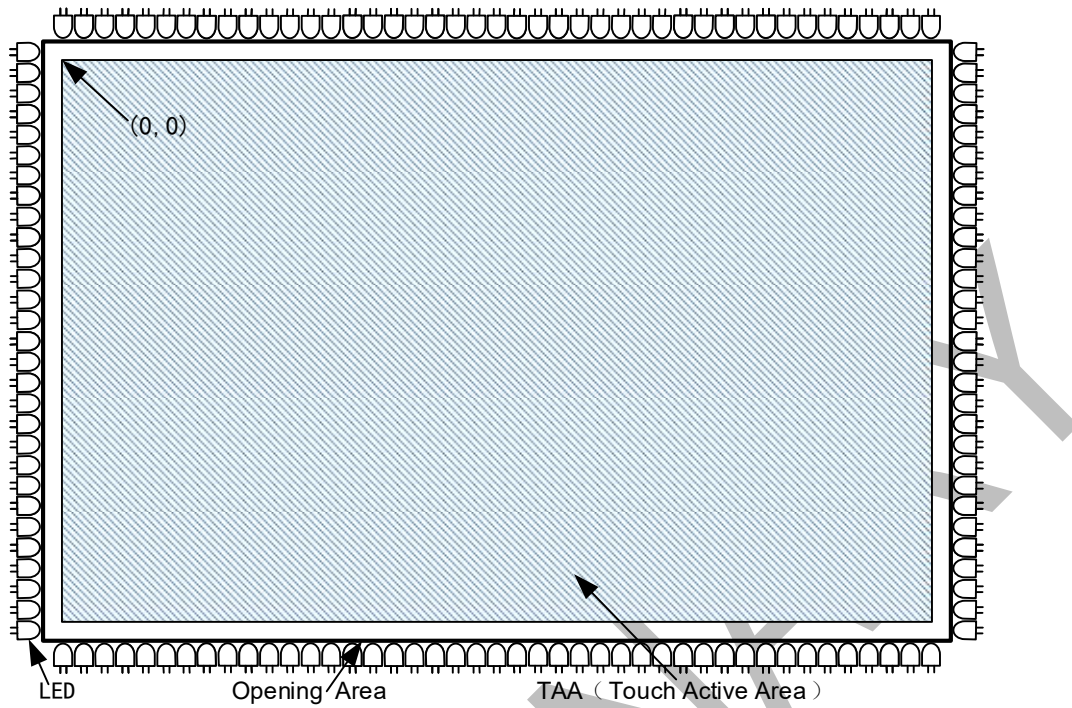
EMC	CE, FCC Class B Compatible
Seal ability	IP65(Front)

**Software Specifications**

Firmware Upgradability	Yes
Device Type	Touch (with gesture support per OS) or, Mouse (Click, drag, double click, right-click)
Calibration	Four-point calibration, no drift
Multi-Monitor Support	Manually Binding
Operating Systems Support	Windows(xp\7\8.1\10),Linux( $\geq 2.6$ ),Android( $\geq 2.6$ ),Vxwork( $\geq 6.5$ )

PRELIMINARY

#### 4、 Panel Opening Area and Touch Active Area



**FIGURE 1**

#### 5、 Dimensional Drawing

Appendix I: Product Dimension Drawing

Appendix II: USB Connector Drawing

#### 6、 ROHS COMPLIANCE

IX3000 Series touchscreen is RoHS compliant.

Appendix I :

ITEM	LOC'T	DESCRIPTION OF CHANGE	APP. BY	DATE	H	G	F	E	D	C	B	A

Size	Touchscre Thickness (D1)	Outside Dimensions			Touch Active Area				Assemble Hole Dimensions					Connection Position (D12)	Lens Thickness (D13)	Glass Thickness (D14)
		Width(D2)	Height(D3)	Width(D4)	Height(D5)	Diagonal(D6)	Width(D7)	Height(D8)	Diameter(D9)	Width(D10)	Height(D11)					
10.4(4.3)	6.8±0.5	246.2±1	193.4±1	211.2±1	158.4±1	264.0±25	24.0±1	177.8±1	Φ3.6±0.1	213.2±1	160.6±1	65±3	3.8±0.1	3.2±0.1		
15.1(4.3)	6.8±0.5	342±1	266±1	306±1	230±1	382.8±0.25	33.5±0.1	250.3±1	Φ3.6±0.1	308±1	232±1	100±3	3.8±0.1	3.2±0.1		
21.6(8.9)	8.0±0.5	517.5±1	309±1	477.5±1	269±1	548.1±0.3	50.8±1	297±1	Φ3.5±0.1	480.1±1	271.6±1	100±3	4.9±0.1	3.2±0.1		
23.6(9.9)	8.0±0.5	563.3±1	335.3±1	523.3±1	295.3±1	600.9±0.3	55.4±1	326±1	Φ3.5±0.1	525.9±1	297.9±1	100±1.5	4.9±0.1	3.2±0.1		

DO NOT SCALE DRAWING  
ALL DIMENSIONS ARE IN MM  
ANGULAR TOL: ±0.5°  
LINEAR TOL:

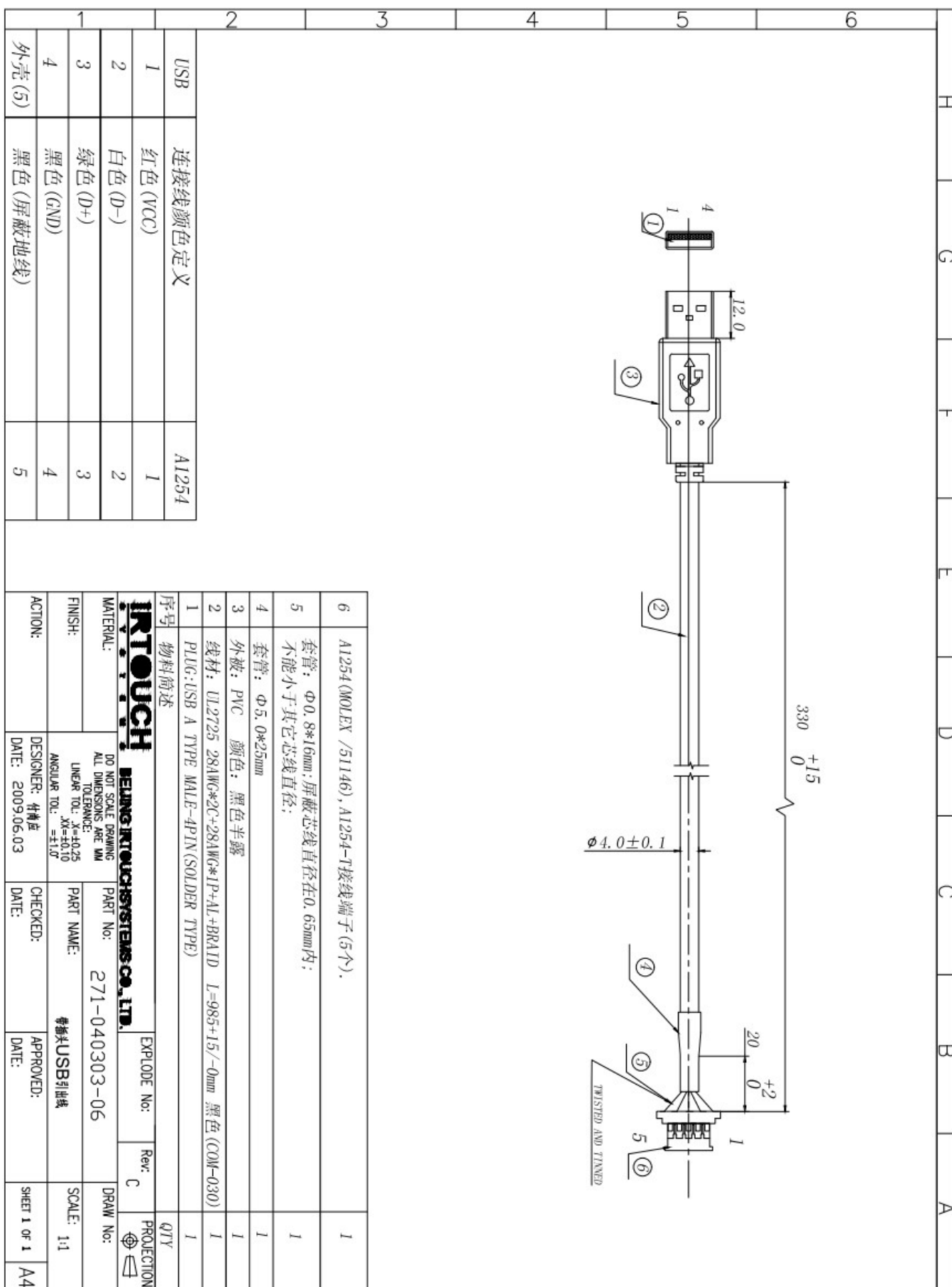
0~50	±0.1
50~150	±0.15
150~250	±0.2
250~400	±0.25
400~1000	±0.3
1000~	±0.5

**IRTOUCH** SANO IRTOUCH SYSTEMS CO., LTD.  
MATERIAL: PART No:  
FINISH: PART NAME: IX3000-series infrared touchscreen  
ACTION: DESIGNER: 史静彬 DATE: 2019.08.15  
CHECKED: 春光 DATE: 2019.08.15  
APPROVED: 祥海 DATE: 2019.08.15  
SCALE: 1:1

EXPLODE No: Rev: A PROTECTION

DRAG No:  
SHEET 1 OF 1 A4  
IRTOUCH-JL-YF-32B

### Appendix II:



6	A1254 (MOLEX /51146), A1254-1接线端子(5个).	1
5	套管：Φ0.8*16mm;屏蔽芯线直径在0.65mm内;不能小于其它芯线直径;	1
4	套管：Φ5.0*25mm	1
3	外套：PVC 颜色：黑色半露	1
2	线材：UL2725 28AWG*2C+28AWG*1P+AL+BRAID L=985+15/-0mm 黑色 (COM-030)	1
1	PLUG:USB A TYPE MALE-4PIN(SOLDER TYPE)	1

序号 物料简述

**IRTOUCH** BEIJING IRTOUCH SYSTEMS CO., LTD.

MATERIAL: DO NOT SCALE DRAWING ALL DIMENSIONS ARE MM

FINISH: TOLERANCE: LINEAR TOL: X:±0.25 XX:±0.10 ANGULAR TOL: ±1.0°

DESIGNER: 付精位 DATE: 2009.06.03

CHECKED: PART NAME: 母插头USB引出线

APPROVED: DATE:

EXPLODE No: Rev: C DRAW No: PROJECTION

SCALE: 1:1

SHEET 1 OF 1 A4