

21.5" Touch Monitor

# **R215-702B-01**

**Technical Specification**

This document contains proprietary technical information, which is the property of the IRTOUCHSYSTEMS and shall not be disclosed to others in whole or in part, reproduced, copied, or used as the basis for design, manufacturing, or sale of apparatus without written permission of IRTOUCHSYSTEMS.

## 1、 Characters

**IRTOUCHSYSTEMS'S** Touch Monitor is a touch display module solution for the self-service touch device manufacturers and system integrators. Features such as vandal proof, water proof, maintenance free as well as long life time make it an ideal choice for many interactive applications such as POS, touch monitors, Kiosks, etc.

RTM is a brand-new series of touch monitor with max 2-point touch.

### Benefits:

- Vandal proof, scrape-resistant (Optional)
- water proof, IP65 on the surface(Only Infrared Touch Screen)
- High-precision
- Fast response speed
- Fault tolerance design to ensure reliability
- Flat surface design, better user experience

### Typical Applications:

- POS
- Desktop touch monitor
- Indoor/outdoor kiosk
- In-vehicles and transportation
- Medical instrument
- Industrial control systems
- Gaming machine
- Ticket machine
- Vending machine
- Electronic class board

## 2、 Order information

Part Number	Description	Version
R215-702B-01	21.5", 16:9, 250 nits, 2 points IR Touch	V1.1

### 3、Specifications

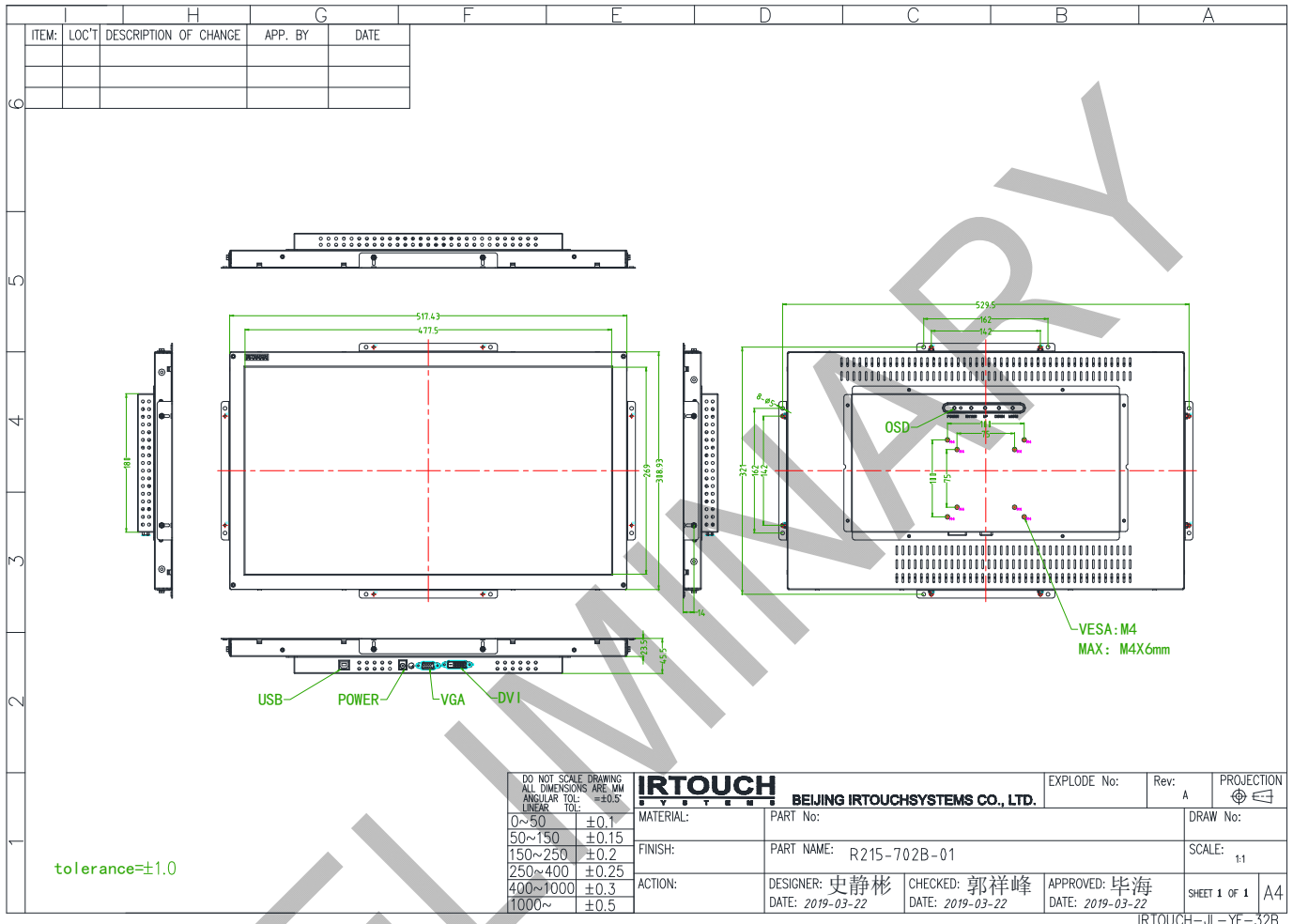
Display Type	21.5" Active Matrix TFT LCD
Case/Bezel Color	Silvery
Aspect Ratio	16:9
Active Display Area	Panel: 476.64mm(H) × 268.11mm(V)
Native Resolution	1920 × 1080 @ 60 Hz
Pixel Response Time (Typ.)	3.8/1.2 (Typ.)(Tr/Td) ms
Support Colors	16.7 million
Brightness (Typ.)	LCD Panel: 250 cd/m <sup>2</sup>
Contrast Ratio (Typ.)	1000:1
Viewing Angle (from centre, CR>10)	Horizontal (left/right): 170° (85°/85°) Vertical (up/down): 160° (80°/80°)
Input Video Signal Connector	VGA DVI-D
Audio (Optional)	PC Audio IN
Speaker (Optional)	1W x 2(8Ω)
Touch Technology	Infrared Touch Screen (IR)
Touch Point	MAX: 2 points
Touch Interface	USB
On Screen Display (OSD)	Control : Power, AUTO, MEMU, UP, DOWN
Power Supply	External Adapter: 100-240 VAC, 50-60 Hz Input Voltage Range: +12VDC ± 5%
Input Connector	DC: Coaxial power jack (2.5 mm pin diameter, 5.5 mm barrel diameter, 11.5 mm barrel length)
Power Consumption (Max)	25 W
Touch Resolution	32767 × 32767
Touch Response Time	< 10ms
Transmittance	> 87%
Surface Hardness	≥7H
Click Life Time	No limited
Temperature Range	<b>Operating:</b> 0°C to 50°C <b>Storage:</b> -20°C to 60°C
Relative Humidity	Operating: 20%-80% Storage: 10%-90%
Warranty	1 years
Agency Approvals	FCC, CE

### 4、 ROHS COMPLIANCE

IRTOUCH touch monitor is RoHS compliant.

### 5、 Mechanical Dimensions

IRTOUCH reserves the right to explain the terms of the document.



### Record of Revision

Version	Change information	Data
1.0	Initial Release	
1.1	Updating of drawing information	22/03/2019